



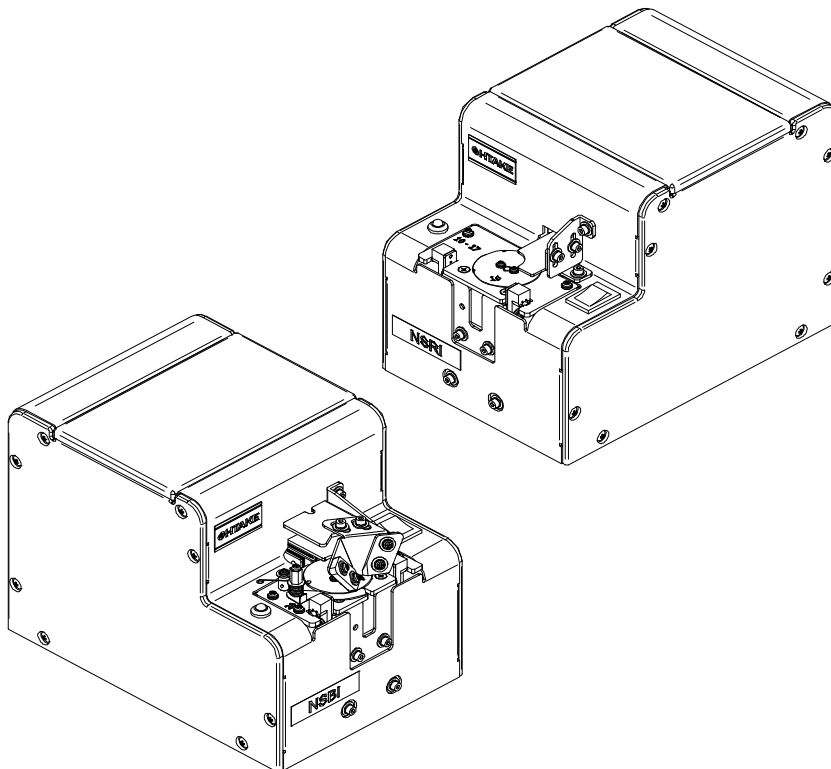
Repair Parts List

NSBI

NSRI

Automatic Screw Feeder

Name : OHTAKE Automatic Screw Feeder NSBI Series
Model : NSBI-10 NSBI-12 NSBI-14 NSBI-17
NSBI-20 NSBI-23 NSBI-26 NSBI-30
Name : OHTAKE Automatic Screw Feeder NSRI Series
Model : NSRI-10 NSRI-12 NSRI-14 NSRI-17
NSRI-20 NSRI-23 NSRI-26 NSRI-30

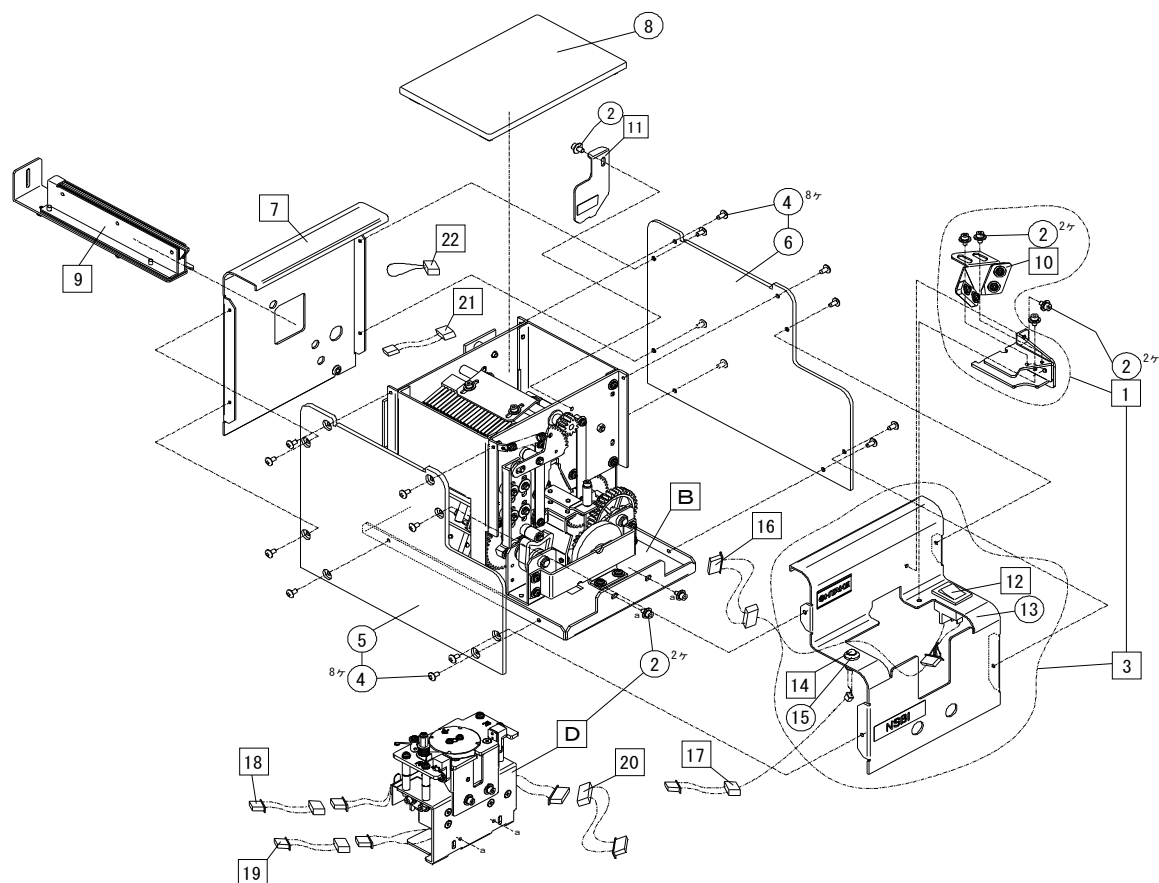


株式会社 大武・ルート工業
OHTAKE-ROOT KOGYO CO.,LTD.

A

【NSBI】

A

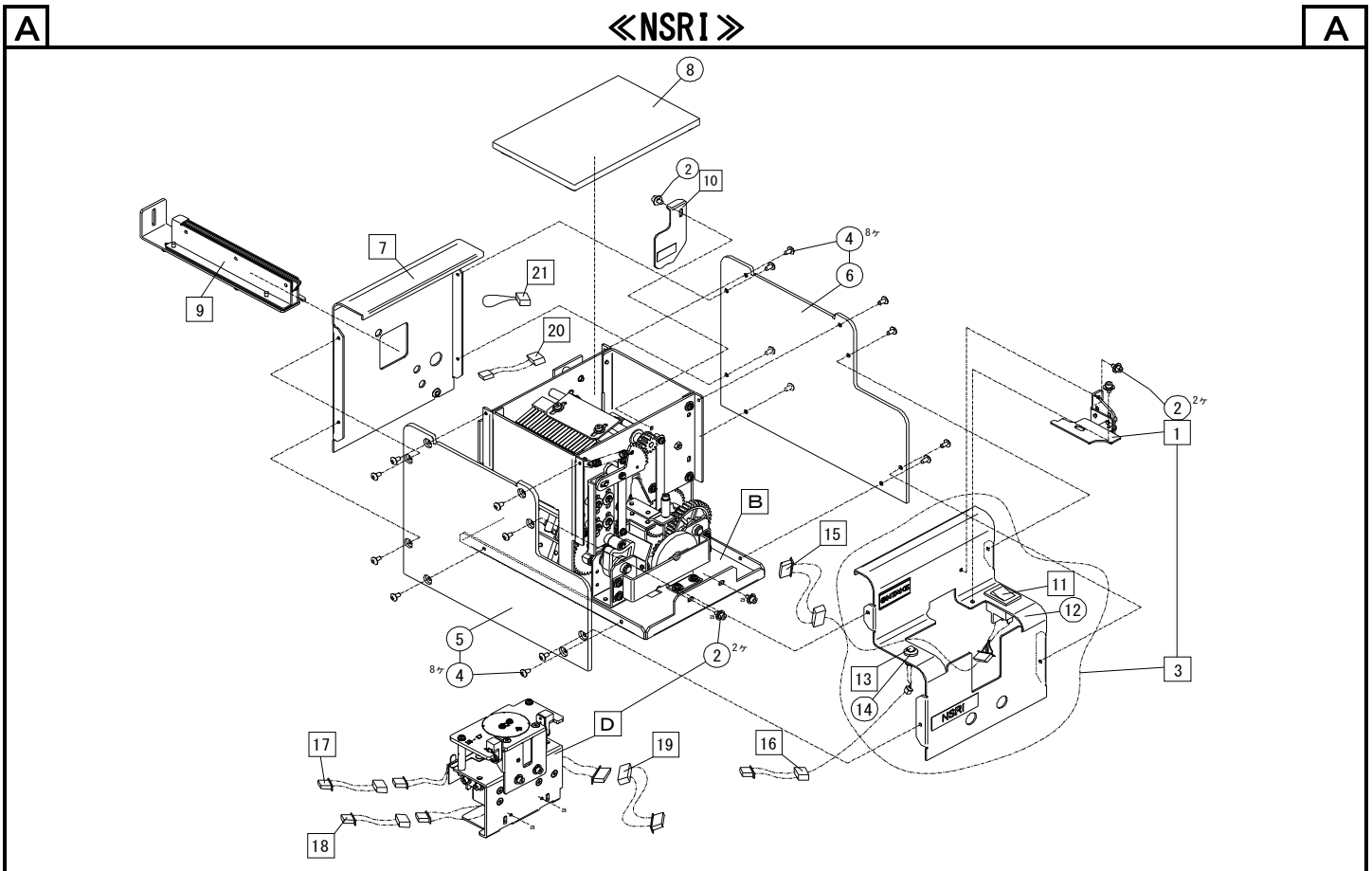


No.	Name of Part	Part Number	Q'ty	Unit Price	Min. Order
B	Block "B" Assembly	Block "B" Assembly	1	—	—
D	Escaper Unit: NSBI2	NSIB7200 #01~#08	Each Nominal	¥	1
1	Bit Guide Unit: NSBI	NSIB6109	1	¥	1
2	Hex. Socket Head Bolt PW, SW M2.6*5	ZZM00261	7	¥	10
3	Front Cover CP: NSBI	NSIB7121 #01	1	¥	1
4	Plus Truss Head Screw M2.6*5 Ni	ZZM00161	16	¥	10
5	Side Cover - Left	NSR07604 #02	1	¥	1
6	Side Cover - Right	NSR07605 #02	1	¥	1
7	Rear Cover CP: NSRI	NSIR7114	1	¥	1
8	Upper Cover	NSB07111	1	¥	1
9	Rail CP: M**BI Types (Model No. M1:BI10, M1.2:BI12, M1.4:BI14, M1.7:BI17, M2:BI20, M2.3:BI23, M2.6:BI26, M3:BI30)	—	Each Nominal	Please purchase a BI**SET	1
	BI**SET (Kit at the time of the resize) (Rail, Passing Window, Escaper, Escaper Guide-Right, Stopper Assembly) (Model No. M1:BI10SET, M1.2:BI12SET, M1.4:BI14SET, M1.7:BI17SET, M2:BI20SET, M2.3:BI23SET, M2.6:BI26SET, M3:BI30SET)		Each Nominal	¥	1
10	Bit Guide Assembly	NSIB6103	1	¥	1
11	Passing Window (M1-M17:SW1017) Passing Window (M2-M3:SW2030)	NSB02052 #01 NSB02052 #02	Each Nominal	¥	1
12	Power Switch (With Harness)	NSIR9105 #05	1	¥	1
13	NSBI Front Cover	NSIB7102	1	¥	1
14	Front Sensor Detector LED (With Harness)	NSIR9105 #03	1	¥	1
15	LED Bezel	RTF-5010	1	¥	1
16	Switch Junction Cable	NSIR9104 #06	1	¥	1
17	LED Junction Cable	NSIR9104 #04	1	¥	1
18	Sensor Junction Cable-Front Sensor	NSIR9104 #14	1	¥	1
19	Sensor Junction Cable-Origin Sensor	NSIR9104 #02	1	¥	1
20	Motor Junction Cable	NSIR9104 #09	1	¥	1
21	Power Junction Cable	NSIR9104 #11	1	¥	1
22	Jumper Connector	NSIR9104 #12	1	¥	1

Sales tax and shipping fees are charged separately. The unit price is for one piece.

※1 Please contact us for further details.

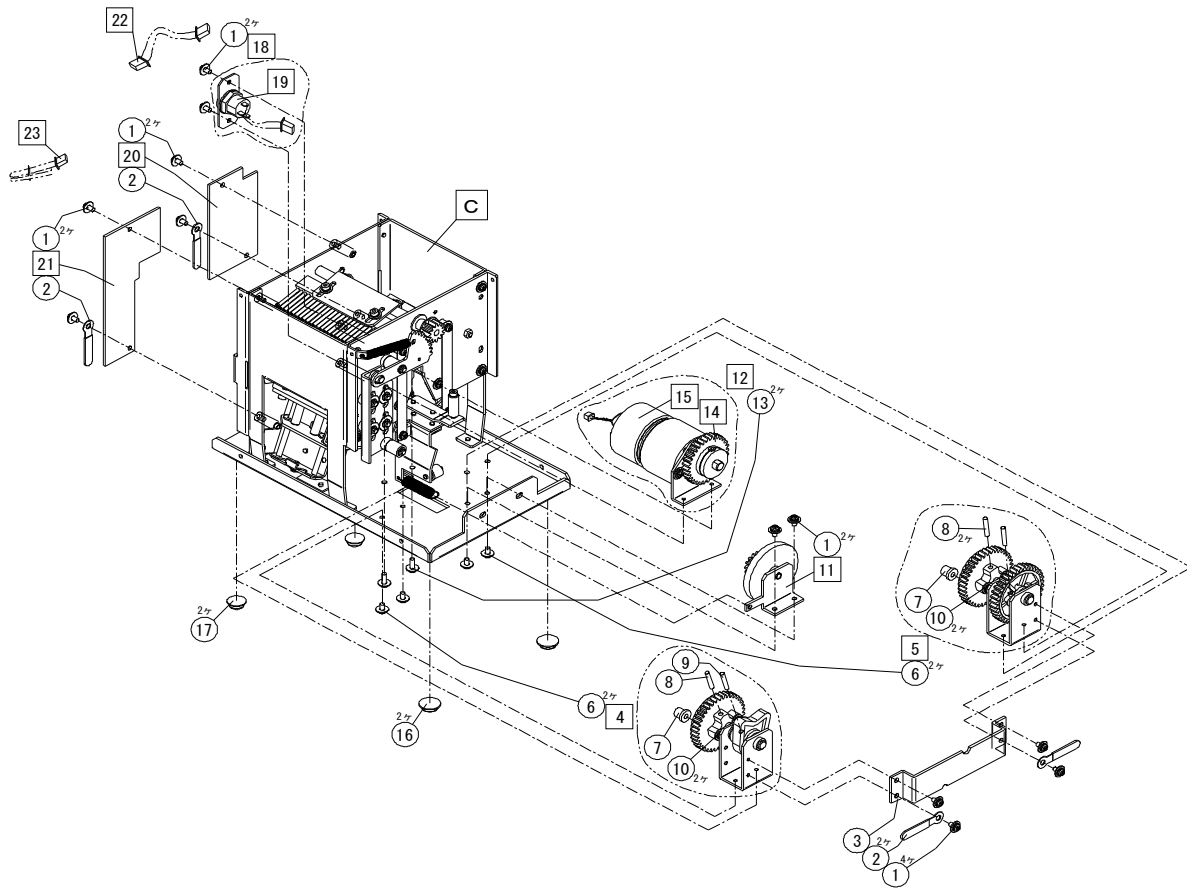
《NSRI》



No.	Name of Part	Part Number	Q'ty	Unit Price	Min. Order
B	Block "B" Assembly	Block "B" Assembly	1	-	-
D	Escaper Unit: NSRI (Model Mix ver)	NSIR7210 #01~#08	Each Nominal	¥	1
1	Presser Plate Unit: NSRI	NSIR6105	1	¥	1
2	Hex. Socket Head Bolt PW, SW M2.6*5	ZZM00261	5	¥	10
3	Front Cover CP: NSRI	NSIB7121 #02	1	¥	1
4	Plus Truss Head Screw M2.6*5 Ni	ZZM00161	16	¥	10
5	Side Cover - Left	NSR07604 #01	1	¥	1
6	Side Cover - Right	NSR07605 #01	1	¥	1
7	Rear Cover CP: NSRI	NSIR7114	1	¥	1
8	Upper Cover	NSB07111	1	¥	1
9	Rail CP: M**RI Types (Model No. M1:RI10, M1.2:RI12, M1.4:RI14, M1.7:RI17, M2:RI20, M2.3:RI23, M2.6:RI26, M3:RI30)	-	Each Nominal	Please purchase a RI**SET	1
	RI**SET (Kit at the time of the resize) (Rail, Passing Window, Escaper, Escaper Guide for Robot) (Model No. M1:RI10SET, M1.2:RI12SET, M1.4:RI14SET, M1.7:RI17SET, M2:RI20SET, M2.3:RI23SET, M2.6:RI26SET, M3:RI30SET)		Each Nominal	¥	1
10	Passing Window (M1-M17: SW1017)	NSB02052 #01	Each Nominal	¥	1
	Passing Window (M2-M3: SW2030)	NSB02052 #02		¥	1
11	Power Switch (With Harness)	NSIR9105 #05	1	¥	1
12	NSBI Front Cover	NSIB7102	1	¥	1
13	Front Sensor Detector LED (With Harness)	NSIR9105 #03	1	¥	1
14	LED Bezel	RTF-5010	1	¥	1
15	Switch Junction Cable	NSIR9104 #06	1	¥	1
16	LED Junction Cable	NSIR9104 #04	1	¥	1
17	Sensor Junction Cable-Front Sensor	NSIR9104 #14	1	¥	1
18	Sensor Junction Cable-Origin Sensor	NSIR9104 #02	1	¥	1
19	Motor Junction Cable	NSIR9104 #09	1	¥	1
20	Power Junction Cable	NSIR9104 #11	1	¥	1
21	Jumper Connector	NSIR9104 #12	1	¥	1

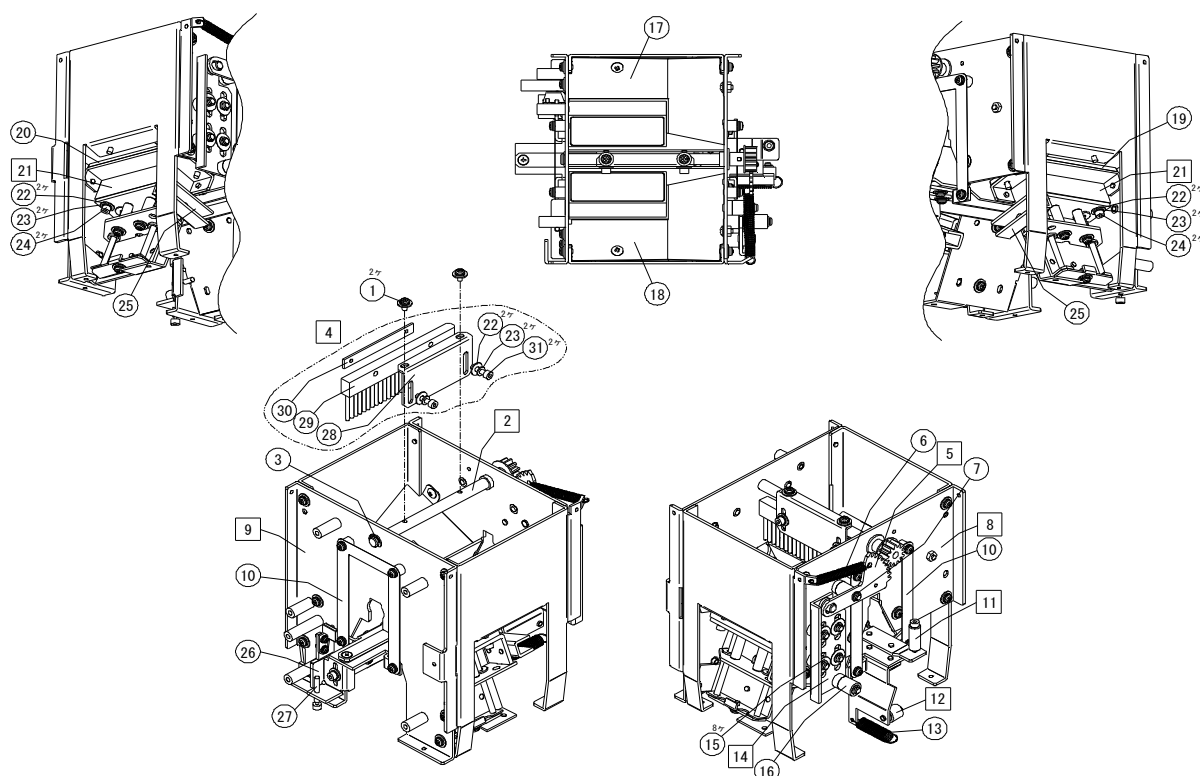
Sales tax and shipping fees are charged separately. The unit price is for one piece.

※1 Please contact us for further details.



No.	Name of Part	Part Number	Q'ty	Unit Price	Min. Order
C	Hopper Unit: NSBI	NSIB7111	1	—	—
1	Pan Head Screw PW, SW M2. 6*5	ZZM00028	12	¥	10
2	Coaching Clip	CS-9	4	¥	10
3	NSIB-Driving Shaft Bracket Supporter	NSIB3101	1	¥	1
4	Driving Shaft Bracket Assembly - Left	NSB03053	1	¥	1
5	Driving Shaft Bracket Assembly - Right	NSB03054	1	¥	1
6	Pan Head Screw PW, SW M2. 6*5, Looseness Prevention	ZZM00054	4	¥	10
7	Driving Roller	NSB03107	2	¥	1
8	Spring Pin 2.5*20	ZZM00560	3	¥	10
9	Spring Pin 2.5*14	ZZM00558	1	¥	10
10	Pan Head Screw PW, SW M2. 6*16	ZZM00034	4	¥	10
11	Vibration Cam Assembly	NSB03055	1	¥	1
12	Main Motor Unit: NSBI	NSIB7115	1	¥	1
13	Pan Head Screw PW, SW M2. 6*8	ZZM00030	2	¥	10
14	Driving Gear #1	NJ04013	1	¥	1
15	Main Motor Assembly (With Harness)	NSIR9105 #15	1	¥	1
16	Bumper	TM-166-12	2	¥	1
17	Bumper	TM-166-3	2	¥	1
18	DC Jack Assembly: NSBI	NSIB7118	1	¥	1
19	Power Plug (With Harness)	NSIR9105 #07	1	¥	1
20	NSBI SPM Drive Board	NSIB9003	1	¥	1
21	NSRI Main Circuit Board	NSIR9002	1	¥	1
22	Signal Junction Cable	NSIR9104 #08	1	¥	1
23	Signal Harness	NSIR9104 #16	1	¥	1

Sales tax and shipping fees are charged separately. The unit price is for one piece.



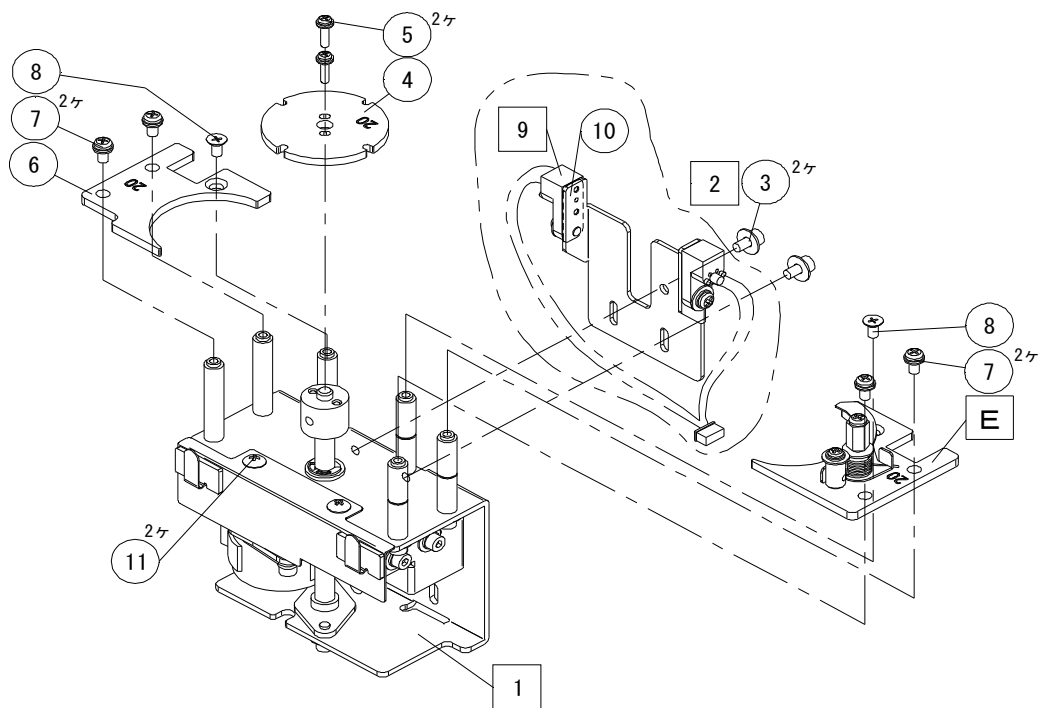
No.	Name of Part	Part Number	Q'ty	Unit Price	Min. Order
1	Pan Head Screw PW, SW M2. 6*5	ZZM00028	2	¥	10
2	Brush Shaft Assembly	NSB02055	1	¥	1
3	E-Type Snap Ring Nominal 5	ZZM00512	1	¥	10
4	Brush Assembly (Standard)	NSB02053 #01	1	¥	1
	Brush Assembly (Hard) (Option)	NSB02053 #02	(1)	¥	1
5	Brush Driving Gear Large 3	NSB02058	1	¥	1
6	Extension Spring	NSB02127	1	¥	1
7	E-Type Snap Ring Nominal 3	ZZM00510	1	¥	10
8	Front Hopper Wall	NSB02051 #02	1	¥	1
9	NSBI-Rear Hopper Wall	NSIB2051	1	¥	1
10	Vibration Plate	NSB02116 #01	2	¥	1
11	Rail Holder Fixing Bolt	NSB04053	1	¥	1
12	Vibration Roller	NJ03032	1	¥	1
13	Extension Spring	NSB04120	1	¥	1
14	Brush Driving Plate Assembly	NSB02054	1	¥	1
15	Polyslider	NSB02128	8	¥	1
16	Brush Driving Plate Roller	NSB02108	1	¥	1
17	Inclined Plate - Right	NSB02122	1	¥	1
18	Inclined Plate - Left	NSB02123	1	¥	1
19	Slant Plate Holder - Right	NSB01123	1	¥	1
20	Slant Plate Holder - Left	NSB01122	1	¥	1
21	Hopper Block Assembly	NSB01054	2	¥	1
22	Plain Washer M2. 6	ZZM00393	6	¥	10
23	Spring Washer M2. 6	ZZM00417	6	¥	10
24	Hex. Socket Head Bolt M2. 6*12	ZZM00186	4	¥	10
25	Driving Holder Slit Plate	NSB01108	2	¥	1
26	Vibration Adjusting Plate	NSR02601	1	¥	1
27	Adjusting Screw	NSB02125	1	¥	1
28	Brush Bracket #1	NSB02111	1	¥	1
29	Brush (Standard)	NSB02110 #01	1	¥	1
	Brush (Hard) (Option)	NSB02110 #02	(1)	¥	1
30	Brush Bracket #2	NSB02112	1	¥	1
31	Hex. Socket Head Bolt M2. 6*10	ZZM00185	2	¥	10

Sales tax and shipping fees are charged separately. The unit price is for one piece.

D

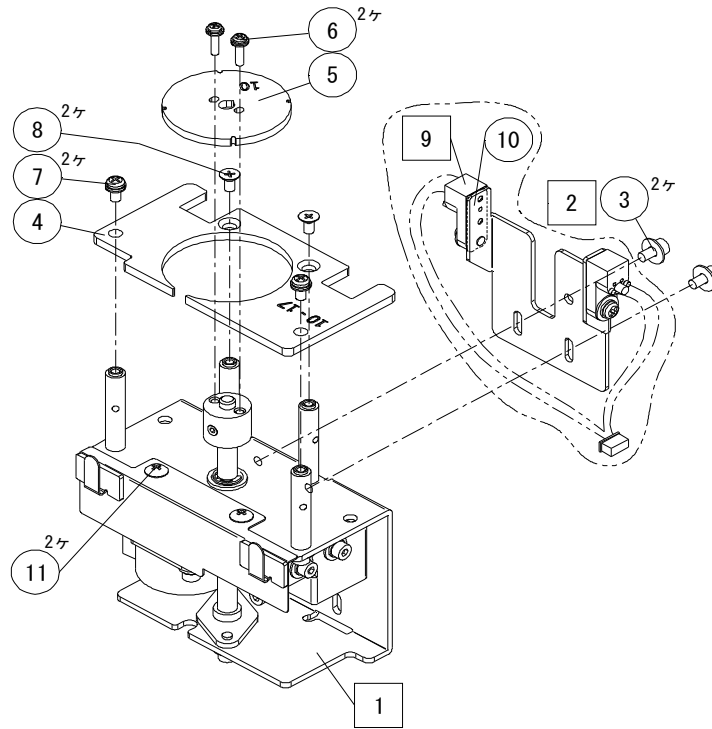
【NSBI】

D



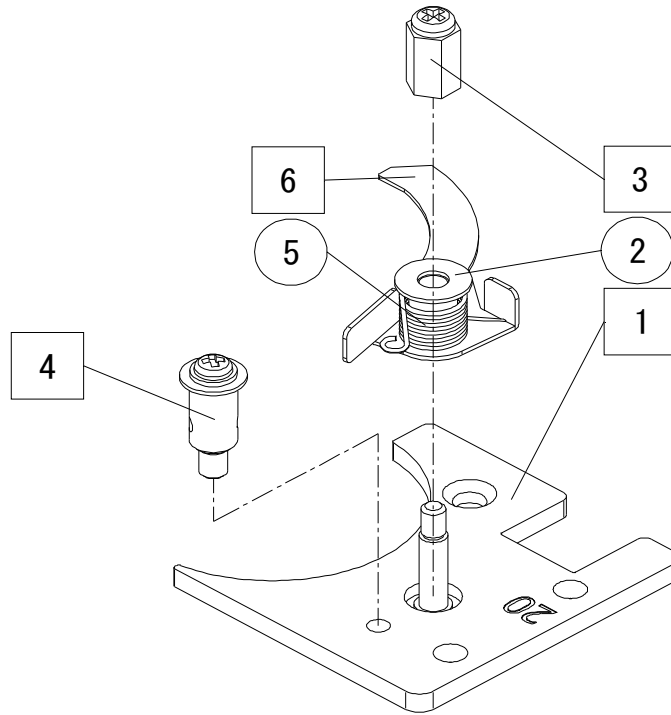
No.	Name of Part	Part Number	Q'ty	Unit Price	Min. Order
E	Stopper Assembly (Model No. M1:SIES10, M1.2:SIES12, M1.4:SIES14, M1.7:SIES17, M2:SIES20, M2.3:SIES23, M2.6:SIES26, M3:SIES30)	TP020806 #01~#08	Each Nominal	¥	1
1	Escaper Driving Unit: NSB12	NSIB7201	1	¥	1
2	Front Sensor Unit: NSBI	NSIB7114	1	¥	1
3	Hex. Socket Head Bolt PW, SW M2.6*5	ZZM00261	2	¥	10
4	E-Escaper: M** (Model No. M1:SIE10, M1.2:SIE12, M1.4:SIE14, M1.7:SIE17, M2:SIE20, M2.3:SIE23, M2.6:SIE26, M3:SIE30)	TP000604 #01~#08	Each Nominal	¥	1
5	Pan Head Screw PW(s), SW M2*8, Ni	ZZM00071	2	¥	10
6	E-Escaper Guide-Right: M** (Model No. M1:SIEM10, M1.2:SIEM12, M1.4:SIEM14, M1.7:SIEM17, M2:SIEM20, M2.3:SIEM23, M2.6:SIEM26, M3:SIEM30)	TP000608 #01~#08	Each Nominal	¥	1
7	Pan Head Screw PW(s), SW M2.6*5	ZZM00060	4	¥	10
8	Plus Countersunk Head Screw M2.6*5, Nylok	ZZM00614	2	¥	10
9	S0 Front Sensor (With Harness)	NSIR9105 #13	1	¥	1
10	Light Receiver Slit Plate	NSR08621	1	¥	1
11	Plus Truss Head Screw M2.6*3 Ni	ZZM00159	2	¥	10

Sales tax and shipping fees are charged separately. The unit price is for one piece.



No.	Name of Part	Part Number	Q'ty	Unit Price	Min. Order
1	Escaper Driving Unit: NSRI (Model Mix ver)	NSIR7211	1	¥	1
2	Front Sensor Unit: NSBI	NSIB7114	1	¥	1
3	Hex. Socket Head Bolt PW, SW M2.6*5	ZZM00261	2	¥	10
4	Escaper Guide for E-Robot: M1.0-1.7 (SIER1017)	TP000610 #01	Each Nominal	¥	1
	Escaper Guide for E-Robot: M2.0-3.0 (SIER2030)	TP000610 #02		¥	1
5	E-Escaper: M**	TP000604 #01 ~ #08	Each Nominal	¥	1
	(Model No. M1: SIE10, M1.2: SIE12, M1.4: SIE14, M1.7: SIE17, M2: SIE20, M2.3: SIE23, M2.6: SIE26, M3: SIE30)				
6	Pan Head Screw PW(s), SW M2*8, Ni	ZZM00071	2	¥	10
7	Pan Head Screw PW(s), SW M2.6*5	ZZM00060	2	¥	10
8	Plus Countersunk Head Screw M2.6*5, Nylok	ZZM00614	2	¥	10
9	S0 Front Sensor (With Harness)	NSIR9105 #13	1	¥	1
10	Light Receiver Slit Plate	NSR08621	1	¥	1
11	Plus Truss Head Screw M2.6*3 Ni	ZZM00159	2	¥	10

Sales tax and shipping fees are charged separately. The unit price is for one piece.



No.	Name of Part	Part Number	Q'ty	Unit Price	Min. Order
1	E-Escaper Guide-Left (With Flange) : M**	TP020812 #01~#08	Each Nominal	¥	1
2	Plain Washer M3	ZZM00394	1	¥	10
3	E-Stopper Spring Stopping Screw CP	TP020804	1	¥	1
4	E-Stopper Spring Holding CP	TP020803	1	¥	1
5	E-Stopper Spring	TP091101	1	¥	1
6	E-Stopper	TP000512	1	¥	1

Sales tax and shipping fees are charged separately. The unit price is for one piece.

<ACCESSORIES>

No.	Name of Part	Part Number	Q'ty	Unit Price	Min. Order
1	AC Adapter (No. UI315-15, I/P:AC100~240V 50/60Hz, O/P:DC15V 1A)		1	-	1
	Accessory AC cord PSE cord (For Japan)		Any one	-	1
	AC cord CCC cord (For China)				
	AC cord KC cord (For Korea)				
	AC cord CE cord (For EU)				
2	Allen Wrench (No. :WRENCH-M2.0)	(WRENCH-M2.0)	1	¥	1
3	Driver	NSN08201	1	¥	1
4	Ground wire	TP021202	1	¥	1
5	Operation Manual NSBI Series	NSBI1MA2	1	¥	1
	Operation Manual NSRI Series	NSRI1MA2	1	¥	1
6					
7					
8					
9					
10					
11					
12					
13					
14					
15					
16					
17					
18					
19					
20					

Sales tax and shipping fees are charged separately. The unit price is for one piece.