



List of Replacement Parts

OM-26M

OM-26R

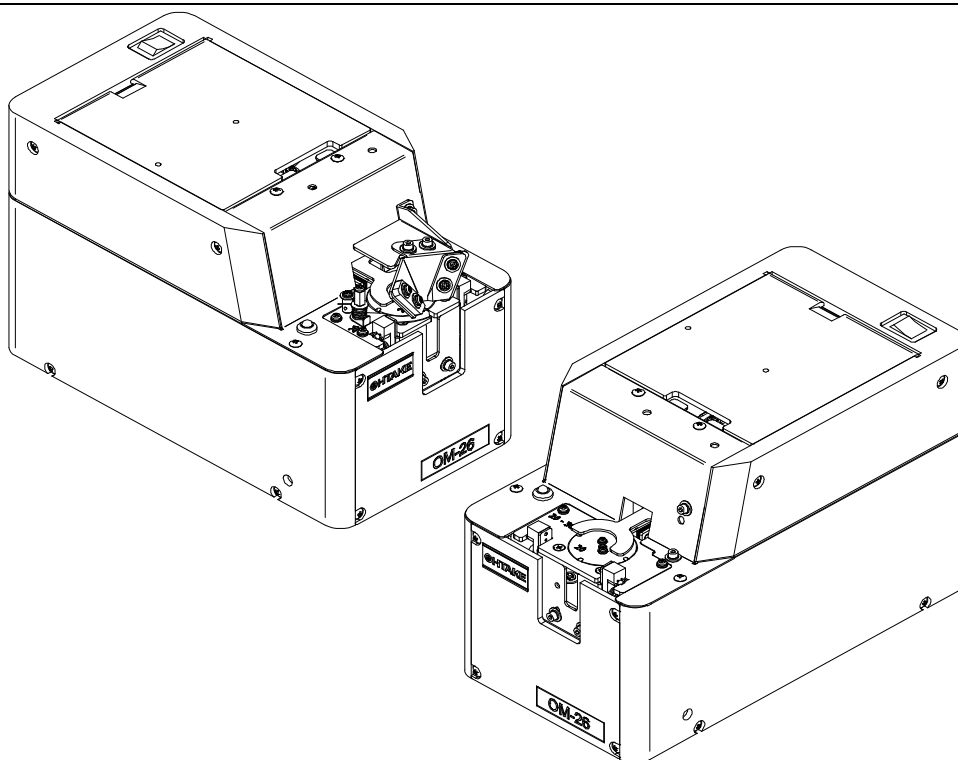
Automatic Screw Feeder

Name : OHTAKE Automatic Screw Feeder OM-26M Series

Model : OM-26M20 OM-26M23 OM-26M26 OM-26M30
OM-26M35 OM-26M40 OM-26M50 OM-26M60

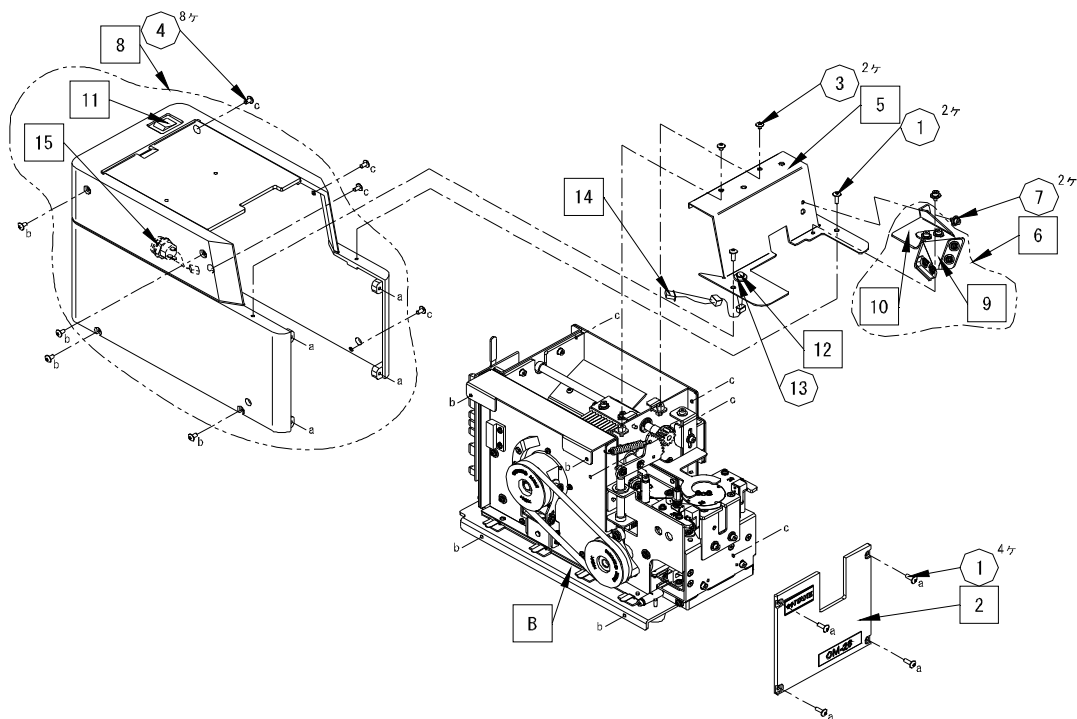
Name : OHTAKE Automatic Screw Feeder OM-26R Series

Model : OM-26R20 OM-26R23 OM-26R26 OM-26R30
OM-26R35 OM-26R40 OM-26R50 OM-26R60



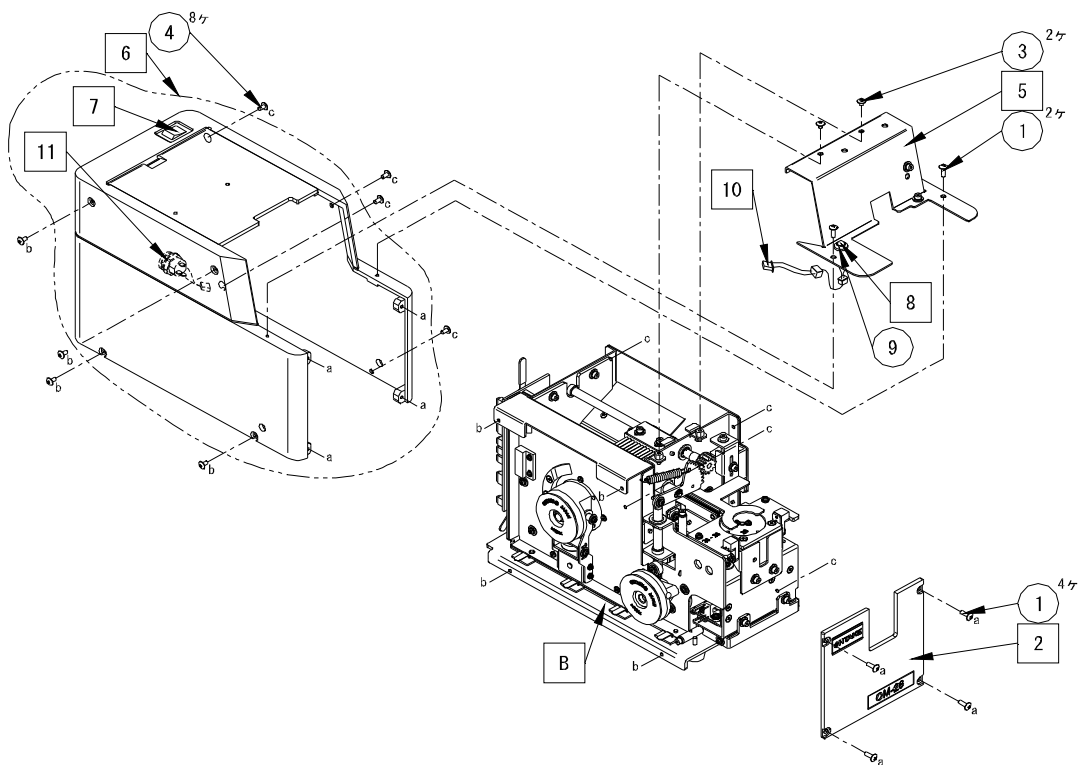
株式会社 大武・ルート工業

OHTAKE-ROOT KOGYO CO., LTD.



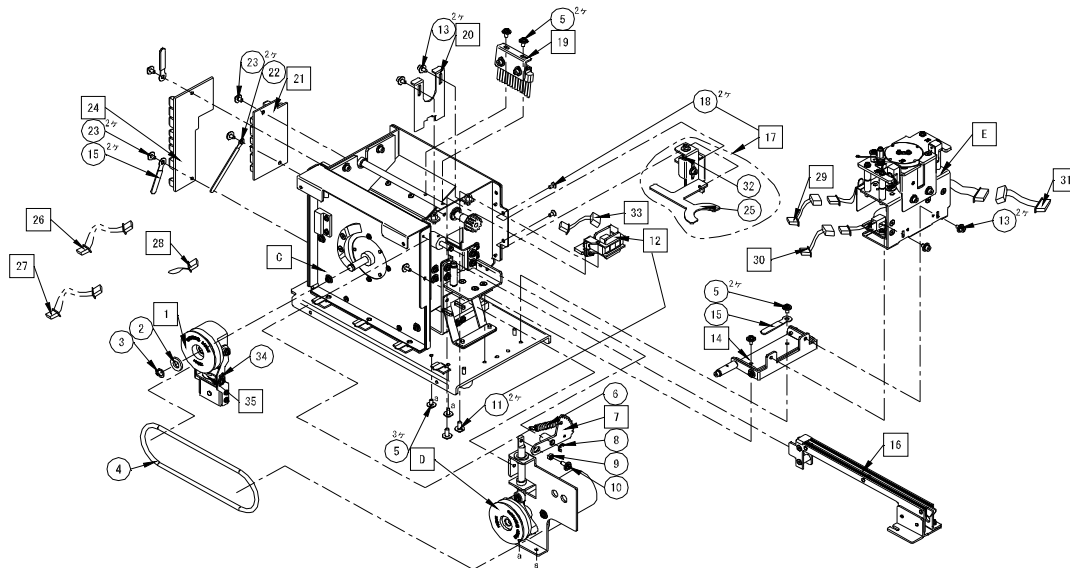
No.	Name of Part	Part Number	Q'ty	Unit Price	MOQ
B	Block "B" Assembly	Block "B" Assembly	Each Nominal	-	-
1	Binding Head Tapping Screw M2.6*8 Ni	ZZM00363	6		10
2	Front Bottom Cover CP	TP011048	1		1
3	Plus Truss Head Screw M2.6*3 Ni	ZZM00159	2		10
4	Plus Truss Head Screw M2.6*5 Ni	ZZM00161	8		10
5	Front Cover CP: OM-26M	TP000906	1		1
6	Bit Guide Assy: OM-26M	TP000905	1		1
7	Hex. Socket Head Bolt PW, SW M2.6*5	ZZM00261	2		10
8	Outside Cover CP	TP011049	1		1
9	Bit Guide Unit	TP000913	1		1
10	Bit Guide Attaching Unit	TP000914	1		1
11	Power Switch (With Harness)	TP001002 #05	1		1
12	LED (With Harness)	TP001002 #03	1		1
13	LED Bezel	RTF-5010	1		1
14	LED Junction Cable	TP001003 #04	1		1
15	Power Plug (With Harness)	TP001002 #06	1		1

Sales tax and shipping fees are charged separately. The unit price is for one piece.



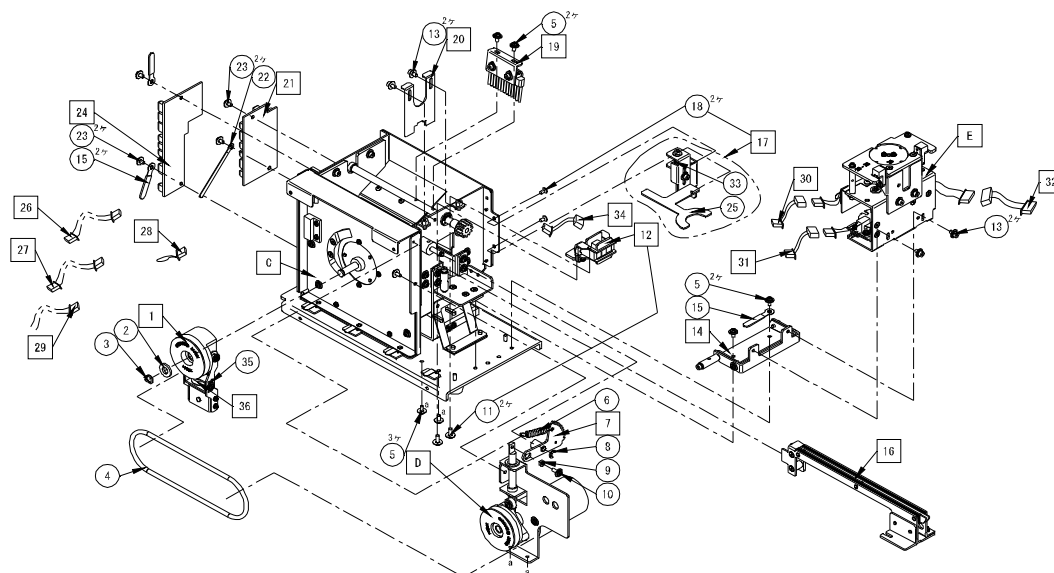
No.	Name of Part	Part Number	Q'ty	Unit Price	MOQ
B	Block "B" Assembly	Block "B" Assembly	Each Nominal	—	—
1	Binding Head Tapping Screw M2.6*8 Ni	ZZM00363	6		10
2	Front Bottom Cover CP	TP011048	1		1
3	Plus Truss Head Screw M2.6*3 Ni	ZZM00159	2		10
4	Plus Truss Head Screw M2.6*5 Ni	ZZM00161	8		10
5	Front Cover CP: OM-26R	TP000907	1		1
6	Outside Cover CP	TP011049	1		1
7	Power Switch (With Harness)	TP001002 #05	1		1
8	LED (With Harness)	TP001002 #03	1		1
9	LED Bezel	RTF-5010	1		1
10	LED Junction Cable	TP001003 #04	1		1
11	Power Plug (With Harness)	TP001002 #06	1		1

Sales tax and shipping fees are charged separately. The unit price is for one piece.



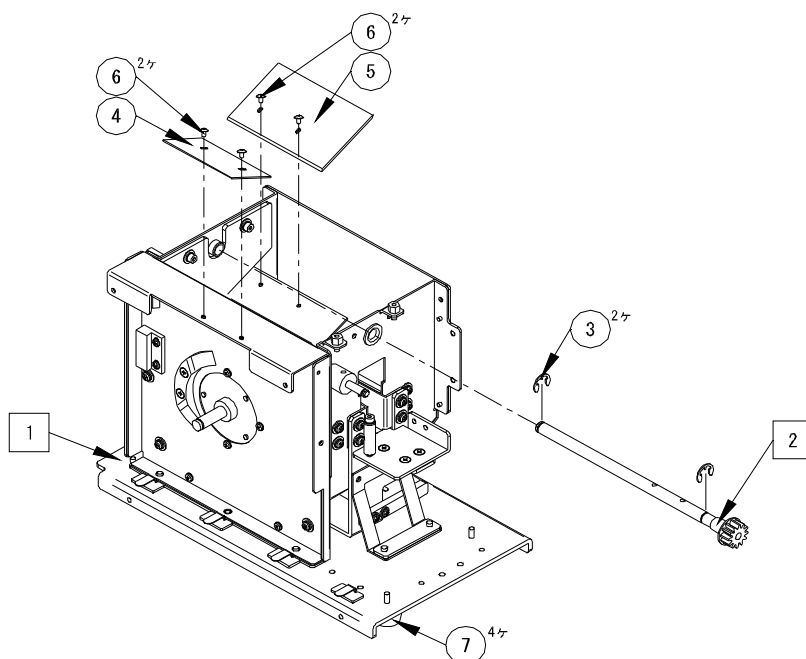
No.	Name of Part	Part Number	Q'ty	Unit Price	MOQ
C	Block "C" Assembly	Block "C" Assembly	1	-	-
D	Motor Bracket Unit	TP011031	1		1
E	Escaper Unit:OM-26M	TP000620 #01~#08	Each Nominal		1
1	Magnet Arm Unit	TP011032	1		1
2	Plain Washer M6	ZZM00397	1		10
3	C-Type Snap Ring Nominal 6	ZZM00536	1		10
4	Drive Belt	TP000511	1		1
5	Pan Head Screw PW , SW M2. 6*6	ZZM00029	7		10
6	Extention Spring	TP000808	1		1
7	Brush Driving Gear Large	TP000469	1		1
8	E-Type Snap Ring Nominal 3	ZZM00510	1		10
9	Stainless Spacer	ZZM00611	1		1
10	Pan Head Screw PW , SW M2. 6*8	ZZM00055	1		10
11	Pan Head Screw PW , SW M3*7	ZZM00620	2		10
12	Solenoid Unit	TP011033	1		1
13	Hex. Socket Head Bolt PW , SW M2. 6*5	ZZM00261	4		10
14	Escaper Fixing Unit	TP011034	1		1
15	Coaching Clip	CS-9	3		10
16	Rail CP: OMM** (Model No. M2:OMM20, M2.3:OMM23, M2.6:OMM26, M3:OMM30, M3.5:OMM35, M4:OMM40, M5:OMM50, M6:OMM60) OMM**SET (Kit at the time of the resize) (Rail, Passing Window, Escaper, Escaper Guide-Right, Stopper Assembly) (Model No. M2:OMM20SET, M2.3:OMM23SET, M2.6:OMM26SET, M3:OMM30SET, M3.5:OMM35SET, M4:OMM40SET, M5:OMM50SET, M6:OMM60SET)	TP000535 #01~#08	Each Nominal	※1	1
17	Presser Plate Unit	TP011035	1		1
18	Plus Countersunk Head Screw M2. 6*5	ZZM00100	2		10
19	Brush Assy:OM-26	TP000908	1		1
20	Passing Window (M2-M3:OM20-30)	TP011011 #01	Each Nominal		1
↓	Passing Window (M3.5-M4:OM35-40)	TP011011 #02			
↓	Passing Window (M5:OM50)	TP011011 #03			
↓	Passing Window (M6:OM60)	TP011011 #04			
21	Stepping Motor Drive Board	TP009003	1		1
22	Coaching Clip	CS-1	1		10
23	Pan Head Screw PW , SW M2. 6*5	ZZM00028	4		10
24	Main Circuit Board	TP001004	1		1
25	Presser Plate 2	TP000708	1		1
26	Signal Junction Cable	TP001003 #07	1		1
27	Power Junction Cable	TP001003 #10	1		1
28	Jumper Connector	TP001003 #11	1		1
29	Sensor Junction Cable-Front Sensor	TP001003 #14	1		1
30	Sensor Junction Cable-Origin Sensor	TP001003 #02	1		1
31	Motor Junction Cable	TP001003 #08	1		1
32	Extention Spring	TP000809	1		1
33	Solenoid Junction Cable	TP001003 #15	1		1
34	Magnetic Arm Spring	TP000407	1		1
35	Roller Arm: Press-fit	TP000508	1		1

Sales tax and shipping fees are charged separately. The unit price is for one piece.



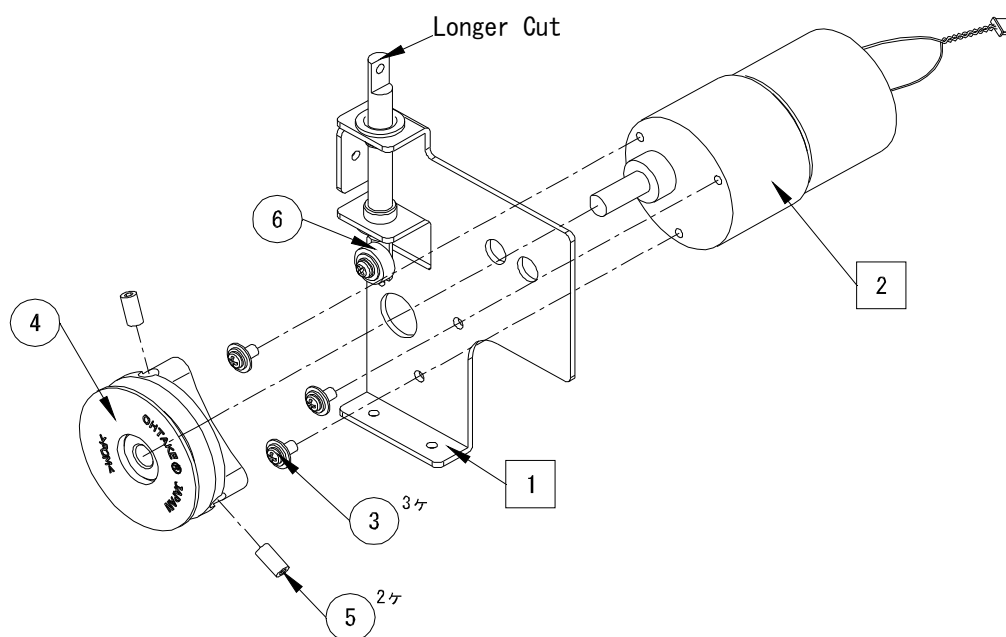
No.	Name of Part	Part Number	Q'ty	Unit Price	MOQ
C	Block "C" Assembly	Block "C" Assembly	1	—	—
D	Motor Bracket Unit	TP011031	1		1
E	Escaper Unit:OM-26R	TP000621 #01~#08	Each Nominal		1
1	Magnet Arm Unit	TP011032	1		1
2	Plain Washer M6	ZZM00397	1		10
3	C-Type Snap Ring Nominal 6	ZZM00536	1		10
4	Drive Belt	TP000511	1		1
5	Pan Head Screw PW , SW M2.6*6	ZZM00029	7		10
6	Extention Spring	TP000808	1		1
7	Brush Driving Gear Large	TP000469	1		1
8	E-Type Snap Ring Nominal 3	ZZM00510	1		10
9	Stainless Spacer	ZZM00611	1		1
10	Pan Head Screw PW , SW M2.6*8	ZZM00055	1		10
11	Pan Head Screw PW , SW M3*7	ZZM00620	2		10
12	Solenoid Unit	TP011033	1		1
13	Hex. Socket Head Bolt PW , SW M2.6*5	ZZM00261	4		10
14	Escaper Fixing Unit	TP011034	1		1
15	Coaching Clip	CS-9	3		10
16	Rail CP: OMR** (Model No. M2:OMR20, M2.3:OMR23, M2.6:OMR26, M3:OMR30, M3.5:OMR35, M4:OMR40, M5:OMR50, M6:OMR60)	TP000536 #01~#08	Each Nominal	※1	1
	OMR**SET (Kit at the time of the resize) (Rail, Passing Window, Escaper, Escaper Guide for Robot) (Model No. M2:OMR20SET, M2.3:OMR23SET, M2.6:OMR26SET, M3:OMR30SET, M3.5:OMR35SET, M4:OMR40SET, M5:OMR50SET, M6:OMR60SET)		Each Nominal	※1	1
17	Presser Plate Unit	TP011035	1		1
18	Plus Countersunk Head Screw M2.6*5	ZZM00100	2		10
19	Brush Assy:OM-26	TP000908	1		1
20	Passing Window (M2-M3:OM20-30) ↓ Passing Window (M3.5-M4:OM35-40) ↓ Passing Window (M5:OM50) ↓ Passing Window (M6:OM60)	TP011011 #01 TP011011 #02 TP011011 #03 TP011011 #04	Each Nominal		1
21	Stepping Motor Drive Board	TP009003	1		1
22	Coaching Clip	CS-1	1		10
23	Pan Head Screw PW , SW M2.6*5	ZZM00028	4		10
24	Main Circuit Board	TP001005	1		1
25	Presser Plate 2	TP000708	1		1
26	Signal Junction Cable	TP001003 #07	1		1
27	Power Junction Cable	TP001003 #10	1		1
28	Jumper Connector	TP001003 #11	1		1
29	Signal Harness	TP001002 #18	1		1
30	Sensor Junction Cable-Front Sensor	TP001003 #14	1		1
31	Sensor Junction Cable-Origin Sensor	TP001003 #02	1		1
32	Motor Junction Cable	TP001003 #08	1		1
33	Extention Spring	TP000809	1		1
34	Solenoid Junction Cable	TP001003 #15	1		1
35	Magnetic Arm Spring	TP000407	1		1
36	Roller Arm: Press-fit	TP000508	1		1

Sales tax and shipping fees are charged separately. The unit price is for one piece.



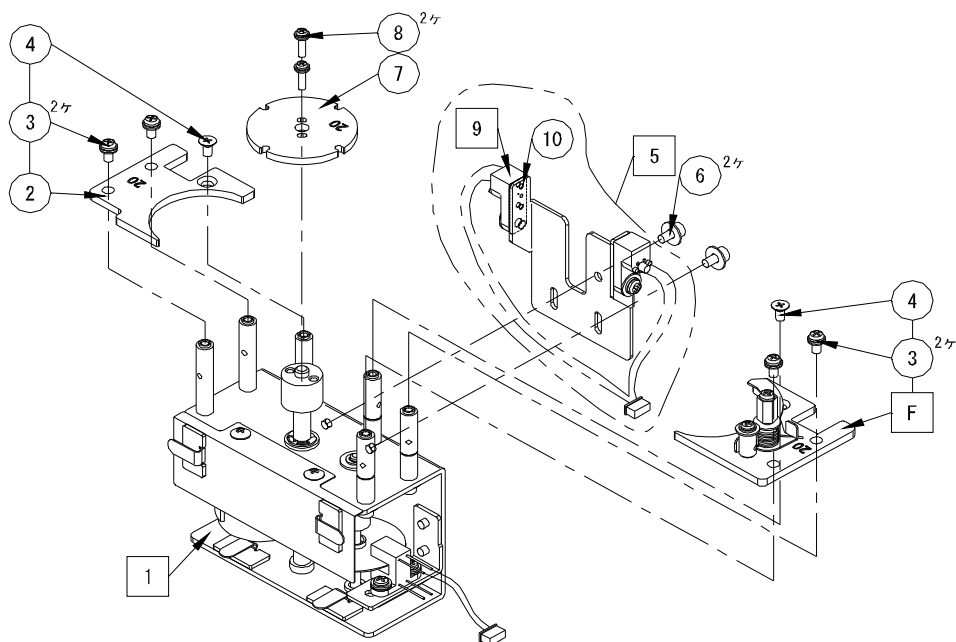
No.	Name of Part	Part Number	Q'ty	Unit Price	MOQ
1	Hopper Unit	TP011036	1	—	—
2	Brush Shaft CP	TP011039	1		1
3	E-Type Snap Ring Nominal 5	ZZM00512	2		10
4	Scraper-Left	TP091201	1		1
5	Scraper-Right	TP091202	1		1
6	Plus Truss Head Screw M2*3,Ni	ZZM00157	4		10
7	Rubber Feet	K5W	4		1

Sales tax and shipping fees are charged separately. The unit price is for one piece.



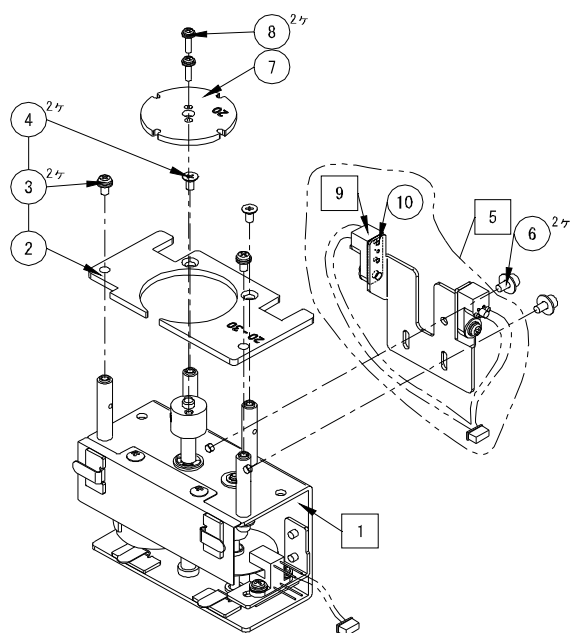
No.	Name of Part	Part Number	Q'ty	Unit Price	MOQ
1	Motor Bracket (With Shaft)	TP011040	1		1
2	Main Motor Assembly (With Harness)	TP001002 #17	1		1
3	Pan Head Screw PW , SW M3*7, Looseness Prevention	ZZM00620	3		10
4	Driving Pulley	TP000509	1		1
5	Hex. Socket Head Screw M4*8, Looseness Prevention	ZZM00388	2		1
6	Roller: Brush Driving Shaft	TP090982	1		1

Sales tax and shipping fees are charged separately. The unit price is for one piece.



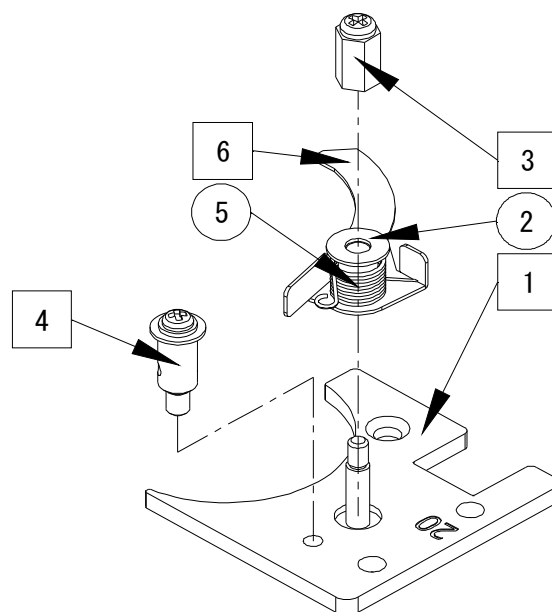
No.	Name of Part	Part Number	Q'ty	Unit Price	MOQ
F	Stopper Assembly	TP020806 #05~#12	Each Nominal		1
	(Model No. M2:SIES20, M2.3:SIES23, M2.6:SIES26, M3:SIES30, M3.5:SIES35, M4:SIES40, M5:SIES50, M6:SIES60)				
1	Escaper Driving Unit(M)	TP000618	1		1
2	E-Escaper Guide-Right: M**	TP000608 #05~#12	Each Nominal		1
	(Model No. M2:SIEM20, M2.3:SIEM23, M2.6:SIEM26, M3:SIEM30, M3.5:SIEM35, M4:SIEM40, M5:SIEM50, M6:SIEM60)				
3	Pan Head Screw PW(s) , SW M2.6*5	ZZM00060	4		10
4	Plus Countersunk Head Screw M2.6*5,Nylok	ZZM00614	2		10
5	Front Sensor Unit	TP000622	1		1
6	Hex. Socket Head Bolt PW , SW M2.6*5	ZZM00261	2		10
7	E-Escaper: M**	TP000604 #05~#12	Each Nominal		1
	(Model No. M2:SIE20, M2.3:SIE23, M2.6:SIE26, M3:SIE30, M3.5:SIE35, M4:SIE40, M5:SIE50, M6:SIE60)				
8	Pan Head Screw PW(s) , SW M2*8,Ni	ZZM00071	2		10
9	SO Front Sensor (With Harness)	TP001002 #13	1		1
10	Light Receiver Slit Plate	NSR08621	1		1

Sales tax and shipping fees are charged separately. The unit price is for one piece.



No.	Name of Part	Part Number	Q'ty	Unit Price	MOQ
1	Escaper Driving Unit(R)	TP000619	1		1
2	Escaper Guide for Robot (Model No. M2~M3:S1ER2030, M3.5~M4:S1ER3540, M5~M6:S1ER5060)	TP000610 #02~#04	Each Nominal		1
3	Pan Head Screw PW(s) , SW M2.6*5	ZZM00060	2		10
4	Plus Countersunk Head Screw M2.6*5,Nylok	ZZM00614	2		10
5	Front Sensor Unit	TP000622	1		1
6	Hex. Socket Head Bolt PW , SW M2.6*5	ZZM00261	2		10
7	E-Escaper: M** (Model No. M2:S1E20, M2.3:S1E23, M2.6:S1E26, M3:S1E30, M3.5:S1E35, M4:S1E40, M5:S1E50, M6:S1E60)	TP000604 #05~#12	Each Nominal		1
8	Pan Head Screw PW(s) , SW M2*8,Ni	ZZM00071	2		10
9	S0 Front Sensor (With Harness)	TP001002 #13	1		1
10	Light Receiver Slit Plate	NSR08621	1		1

Sales tax and shipping fees are charged separately. The unit price is for one piece.



No.	Name of Part	Part Number	Q'ty	Unit Price	MOQ
1	E-Escaper Guide-Left: M**	TP020805 #05~#12	Each Nominal		1
2	Plain Washer M3	ZZM00394	1		10
3	E-Stopper Spring Stopping Screw CP	TP020804	1		1
4	E-Stopper Spring Holding CP	TP020803	1		1
5	E-Stopper Spring	TP091101	1		1
6	E-Stopper	TP000512	1		1

Sales tax and shipping fees are charged separately. The unit price is for one piece.

<ACCESSORIES>

No.	Name of Part	Part Number	Q'ty	Unit Price	MOQ
1	AC Adapter (No. UI315-15, I/P:AC100~240V 50/60Hz, O/P:DC15V 1A)		1		1
2	Allen Wrench	(WRENCH-M2.0)	1		1
3	Driver	NSN08201	1		1
4	Operation Manual OM-26MType	OMM1MA01	1		1
	Operation Manual OM-26RType	OMR1MA01	1		1
5					
6					
7					
8					
9					
10					
11					
12					
13					
14					
15					
16					
17					
18					
19					
20					

Sales tax and shipping fees are charged separately. The unit price is for one piece.